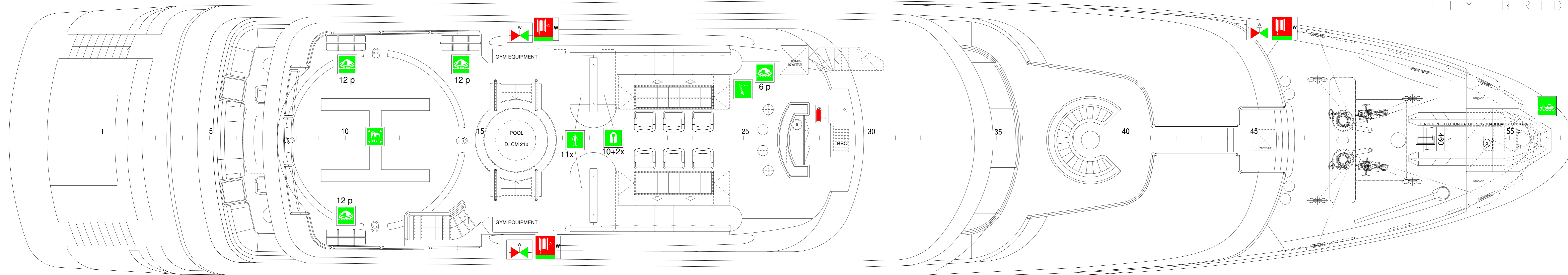
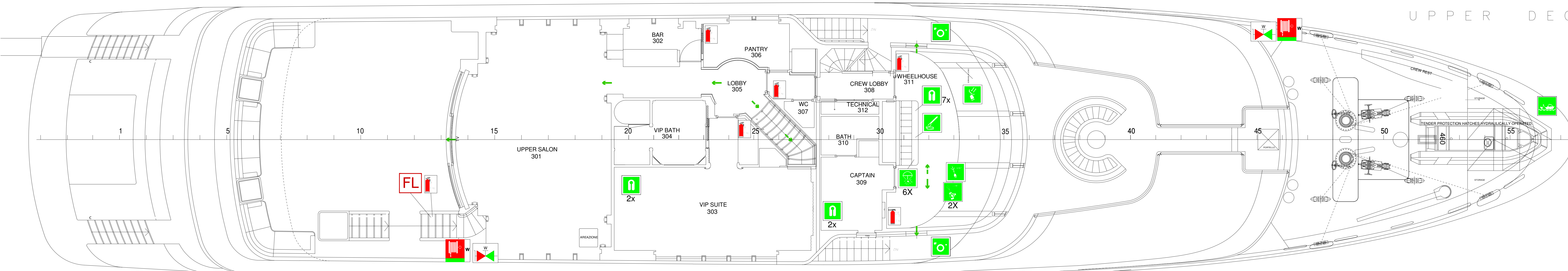


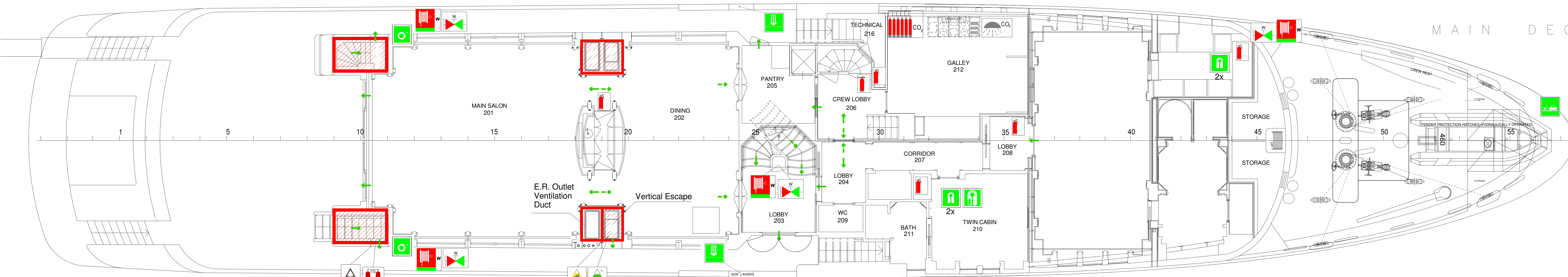
FLY BRIDGE



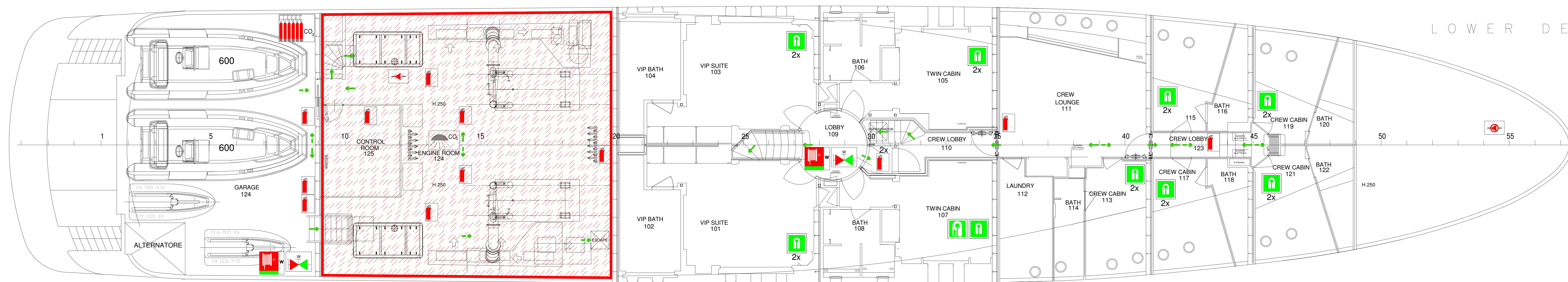
UPPER DECK



MAIN DECK



LOWER DECK



0 1 2 3 4 5 6 METRES

SYMBOL	NUM.	DESCRIPTION
		PRIMARY ESCAPE ROUTE
		SECONDARY ESCAPE ROUTE
	2	SPACE PROTECTED BY CO2 SYSTEM
	1	CO2 RELEASE STATION
	1	REMOTE CONTROL FOR FUEL OIL VALVES
	1	E.R. VENTILATION REMOTE CONTROL
	1	FUEL PUMP REMOTE SHUT-OFF
	1	CO2 FIRE EXTINGUISHER 16 kg
	2	CO2 FIRE EXTINGUISHER
	1	POWDER FIRE EXTINGUISHER 5 kg
	15	POWDER FIRE EXTINGUISHER 6 kg
	5	POWDER FIRE EXTINGUISHER 12 kg
	1	FIRE PUMP
	1	EMERGENCY FIRE PUMP
	2	FIXED CO2 FIRE EXTINGUISHING BATTERY
	9	HYDRANT
	9	FIRE HOSE AND NOZZLE
	1	MUSTER STATION
	2	EMBARKATION LADDER
	3+1	LIFERAFT (12 PERSON + 6 PERSON)
	1	RESCUE BOAT
	42+2	LIFEJACKETS WITH LIGHT + (inflatable lifejacket)
	2	CHILDREN LIFE JACKETS
	11	IMMERSION SUITES
	2	LIFEBUOYS WITH LIGHT (Provided with buoyant line having a minimum length of 30 m)
	2	LIFEBUOYS WITH LIGHT AND SMOKE
	2	EPIRB
	1	SART
	2	PORTABLE HAND-HELD GMDSS VHF
	1 SET	LINE THROWING APPLIANCE
	6	PYROTECHNICS (PARACHUTE SIGNALS)
	-	A-30 CLASS BULKHEAD
	-	A-30 CLASS CEILINGS

REV.	MODIFICATION	DATE
1	POSITION, NUMBER AND CAPACITY OF THE LIFERAFTS	17/07/2007
2		
3		
4		

115-00-10	HYDRO TEC S.A.S. VIA S. CATERINA 53, 17010 VARAZZE ITALIA TEL. 0981 907111 FAX 0981 907112 WWW.HYDROTEC.IT	NAVAL ARCHITECTURE MARINE ENGINEERING PROJECT MANAGEMENT
Project No.	GOLDENPORT	
Scale	1:50	CONSTRUCTION No.
Client	50 MT M/Y	
Project Name	FIRE CONTROL PLAN	

A TERMI DI LEGGE E' VIETATA LA COMUNICAZIONE A TERZO LO SFRUTTAMENTO O LA RIPRODUZIONE ANCHE PARZIALE DI QUESTO DISEGNO